

1363.1259
MOTO 2
c.3

Illinois
Blagojevich, Governor

41820796



Illinois State Police
Larry G. Trent, Director

Motorcycle Safety Awareness

ILLINOIS DOCUMENTS

APR 26 2005

ILLINOIS STATE LIBRARY

“Motorcycle Fatalities Increasing”



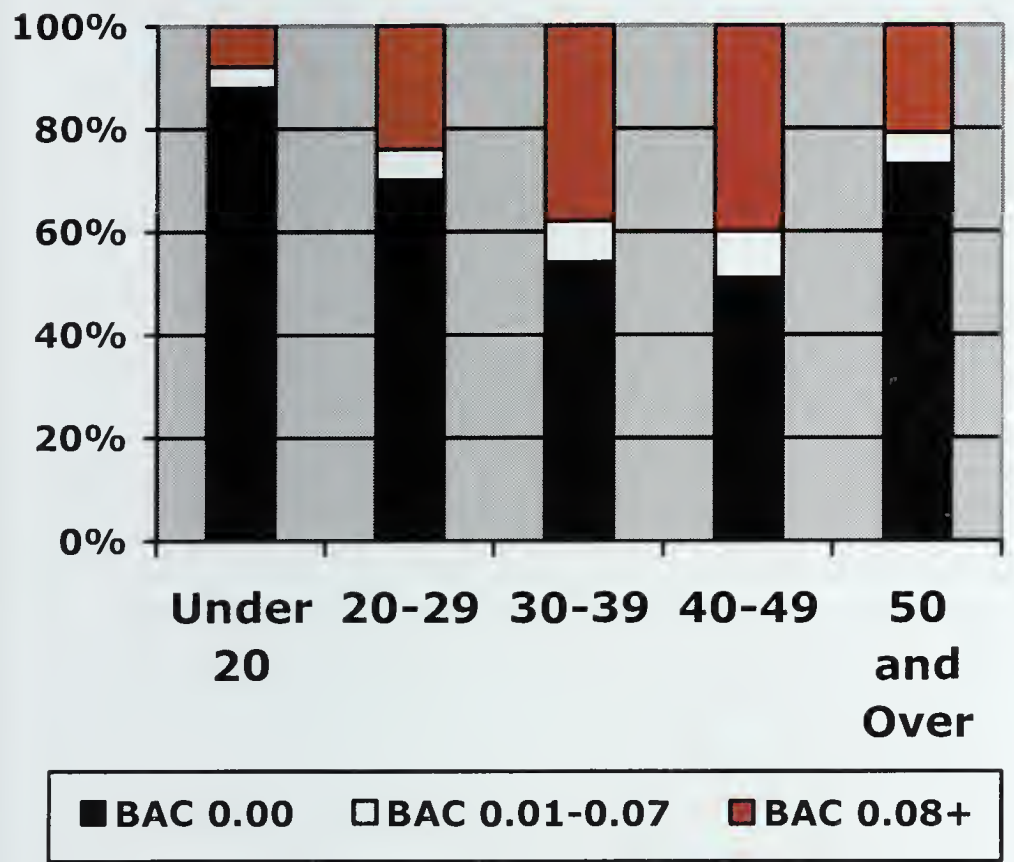
Illinois State Police

Traffic Safety Facts 2003 Motorcycles

- In Illinois, there were 137 fatal motorcycle crashes resulting in 145 deaths, 66 of these crashes were alcohol related.
- Nearly one out of four motorcycle operators in fatal crashes were operating the vehicle with an invalid license.
- Per vehicle mile, motorcyclists are about 27 times as likely as passenger car occupants to die in a traffic crash.
- Helmets are estimated to be 37 percent effective in preventing fatal injuries to motorcyclists.
- Almost half of the motorcycle operators who died in single vehicle crashes in 2003 had BAC level of .08 or higher.

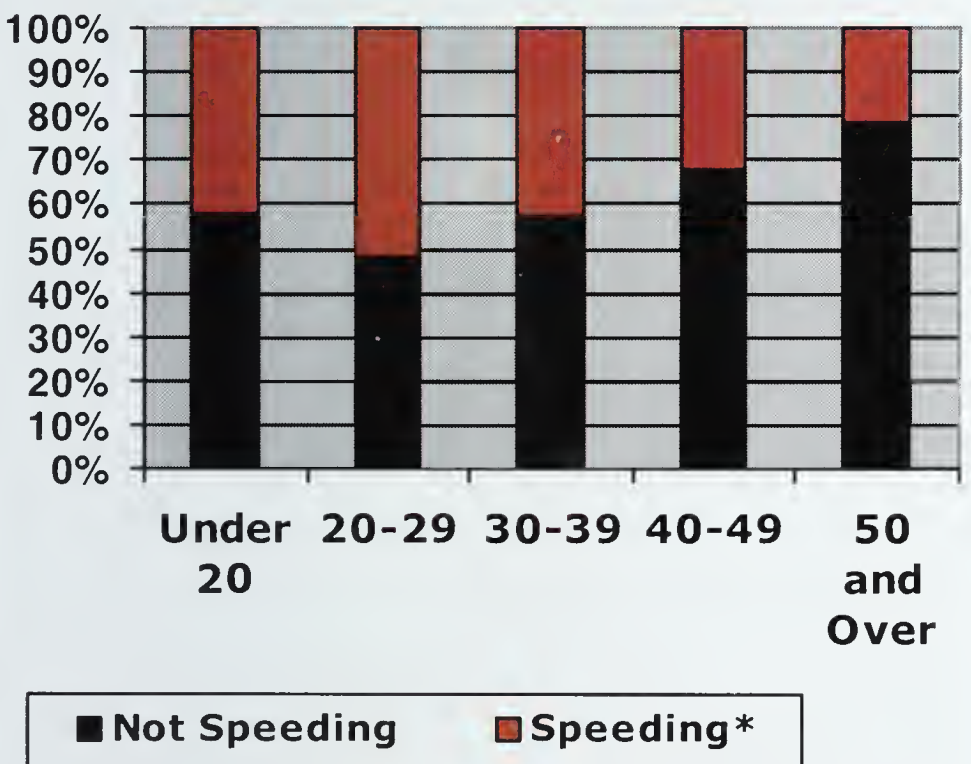
Source: National Highway Transportation Safety
Administration

Motorcycle Operators Killed by Alcohol Level and Age Group



Source: National Highway Transportation Safety Administration

Motorcycle Operators Killed by Speeding Factor and Age Group



Source: National Highway Transportation Safety Administration

Safety Tips

The Illinois State Police is reminding motorists that warmer weather means an increase in motorcycle traffic. According to Illinois Department of Transportation statistics, the number of motorcycle fatalities has increased by more than 33 percent during the past two years, many of which involved the other vehicles driver being unable to see the motorcyclist.

The Illinois State Police offer the following safety tips for motorcycle riders:

- Obey all traffic laws, especially those relating to speed and proper lane usage.
- Always wear a helmet and other safety equipment such as gloves and boots.
- Drive defensively. Always assume that all vehicles cannot see you and could potentially turn in front of you. Be especially cautious and watchful at intersections.
- Remember that alcohol and riding motorcycles do not mix.
- Be especially careful when riding on wet roads. Remember you only have two wheels.
- Keep up with the recommended maintenance on your motorcycle.

Reality Check...

Man killed in motorcycle crash

November 21, 2004 — One man is dead after a crash overnight along the Eisenhower Expressway. The man was riding a motorcycle near Mannheim Road.

Investigators say no other vehicles were involved. The driver appeared to just lose control as he was exiting the expressway. The southbound Mannheim exit on the inbound side was closed for several hours as police investigated.

It's not known yet if alcohol or speeding were factors in the crash.

Courtesy of www.abc7chicago.com

Don't let this tragedy become your reality. ISP urges all motorcyclists to wear helmets and to use extreme caution while riding.





3 0112 120252330



For more information contact:
Public Information Office
Telephone: (217) 782-6637
TDD: (800) 255-3323
www.isp.state.il.us



www.nhtsa.dot.gov

